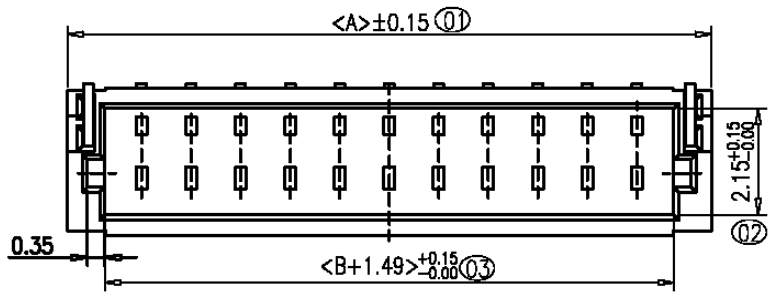


**CUSTOMER COPY**

REV.	DESCRIPTION	APP.	DATE
A	NEW DESIGN	Amos	2010-09-03



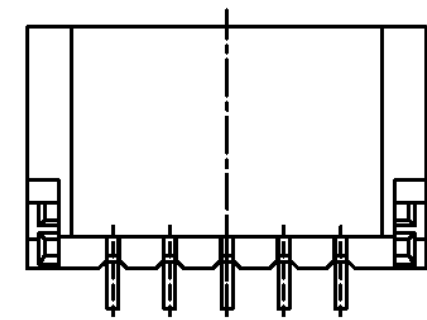
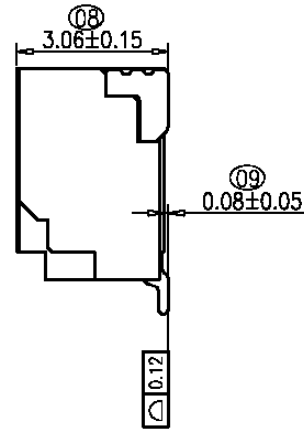
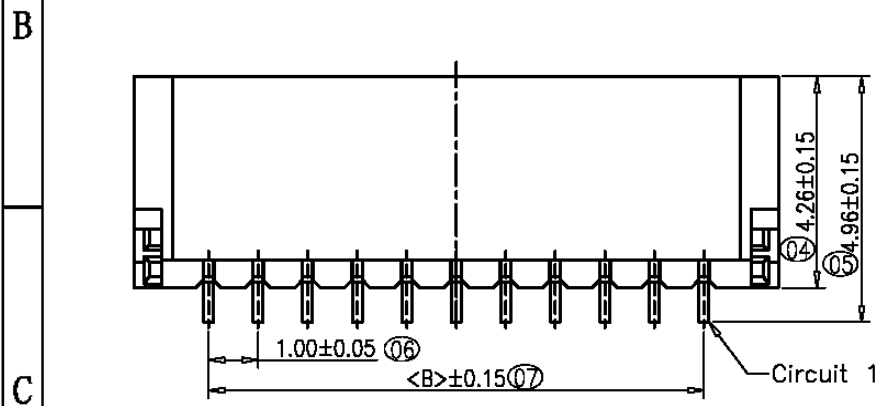
**NOTES:**

CURRENT RATING: 2A AC/DC.  
 VOLTAGE RATING: 100V AC/DC.  
 TEMPERATURE RANGE: -25°C~+85°C.  
 CONTACT RESISTANCE: 20mΩMAX.  
 INSULATION RESISTANCE:500MΩMIN.  
 WITHSTANDING VOLTAGE:500V AC/MINUTE.

**ORDER INFORMATION**

1200 11 X XX X

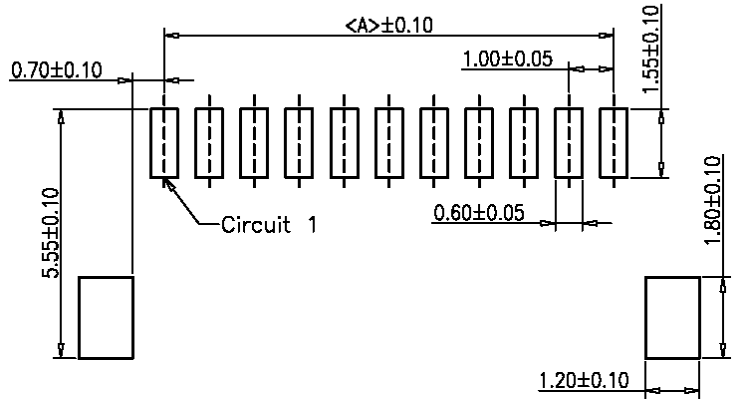
- 1:Plating Tin
- No. of Contact
- 0:Reel Packing
- 1:Tube Packing
- 90° SMT Type



2-8P示意图

无SY MARK PART NO.	DIMENSION	
	A	B
02	4.00	1.00
03	5.00	2.00
04	6.00	3.00
05	7.00	4.00
06	8.00	5.00
07	9.00	6.00
08	10.00	7.00
09	11.00	8.00
10	12.00	9.00
11	13.00	10.00
12	14.00	11.00
13	15.00	12.00
14	16.00	13.00
15	17.00	14.00
16	18.00	15.00
17	19.00	16.00
18	20.00	17.00
19	21.00	18.00
20	22.00	19.00

Recommended P.C.B Layout(Top Side)  
 P.C.B Thickness = 1.20mm (Tolerance=±0.05)



鈺滿榮企業股份有限公司 ACMELUX CO., LTD.

TEL: 886-2-85124595 FAX: 886-2-85124322

0.0±0.30	Scale: 1:1	Title:	PART NO:
0.00±0.20	Unit: mm	Pitch 1.0mm 90° SMT Side Entry	APP BY: Hung
0.000±0.1		Wire to Board Wafer Connector	CHK BY: Cheryl
		Material: RoHS	DR BY: Amos
		DWG. NO. C120011XXXX	A303